



HAGLEY AND CLENT CHILDREN, YOUTH & FAMILY WORKER





ONE
CHURCH.
THREE
LOCATIONS.



ST. JOHN THE BAPTIST

ST. LEONARD'S

ST. SAVIOUR'S

ST. JOHN THE BAPTIST, HAGLEY



ST. LEONARD'S, CLENT



ST. SAVIOUR'S, HAGLEY



ABOUT OUR CHURCHES

Welcome to the benefice of Hagley and Clent and our three beautiful churches. We thank you for considering us and hope you will reflect through prayer if God is calling you to serve our community here.

Nestled amid the beauty of the Clent Hills and the timeless heritage of Hagley Hall and its grounds, our rural parish churches serve thriving villages whilst being just 30 minutes from the vibrant city of Birmingham and the historic city of Worcester.

Together, our churches seek to serve a community of around 10,000 parishioners. With our regular 145 worshipers we bring together those committed to traditional Church of England practices alongside others with more modern evangelical expression. We'd love to grow this number so more people can know God's love. To do this, we're looking for a Children, Youth and Family Worker to work alongside the Rector and Associate Priest in our missional desire to reach every generation with the love of Jesus.

ONE CHURCH. THREE LOCATIONS

HOW WE DESCRIBE OURSELVES



WHAT WE LIKE MOST ABOUT OUR CHURCH

“The services are not repetitive”

“It is a beautiful setting and a peaceful and quiet place for prayer”

“It is always welcoming and helpful to new members”

“There are quite a few younger members of the church starting to take on more roles within the church”

“You can meet a variety of folk in the congregations at all three churches”

“It is a place of solitude, reflection and beautiful memories”

“There is a welcoming feeling as soon as you come in”

“There is a peaceful space for reflection at St. John’s and a busy ‘hub of the village’ atmosphere at St. Saviour’s”



SETTING A VISION FOR THE FUTURE

At the heart of the Benefice of Hagley and Clent is a growing commitment to become a **truly multigenerational church** – a community where wisdom and tradition meet creativity and renewal. We believe the Church is strongest when all generations are **welcomed, valued, and empowered** to journey together in faith.

In this new season of mission and evangelism, we are seeking to build a church that honours our **rich Anglican heritage** with reverence and gratitude; while courageously stepping into new and contemporary expressions of **worship, discipleship, and outreach**.

A PLACE FOR EVERYONE

We long to be a place where every person is **disciplined from where they are** – whether they're exploring faith for the first time, returning after many years, or growing in a mature walk with Christ. Whatever your season of life or stage of belief, **there is space here for you.**

We are in the process of prayerfully shaping a vision for the future that blends **historic faithfulness** with **Spirit-led innovation**. This is a journey of partnering across generations as we seek to **live out the Gospel** in fresh and faithful ways for the communities we serve.



JOB BRIEFING: CHILDREN, YOUTH AND FAMILY WORKER

Location: Benefice of Hagley and Clent
Hours: Full-time (evenings and weekends required)
Salary: £30,000 (plus additional financial support*)
Start Date: To be agreed

We are seeking a **professionally qualified** (JNC-recognised) Children, Youth and Family Worker with a **strong track record** in Christian youth and children's ministry. This is an exciting opportunity to shape and develop ministry across our Church of England multi-parish benefice, working **innovatively** and **collaboratively** with clergy, volunteers, schools, and families to **build engagement** with children, young people and their households.

You will play a key role in building our children and youth ministry **from the ground up** — creating fresh, engaging opportunities for **faith, belonging, and growth**. As a team player, you'll equip volunteers and connect with schools and community groups to help young people find their place in the life of the Church.

We are at the **beginning of an exciting journey** and we are looking for someone with the faith, creativity, and energy to help us build this ministry in ways that are rooted in prayer and shaped by relationship across the generations.

THE PERSON WE ARE LOOKING FOR

ESSENTIAL CHARACTERISTICS

- **Broad and deep experience** of Christian youth work / children's work
- A **team player** who will support and encourage the existing staff and volunteers
- **JNC Qualified at Professional Level**: full BA (Hons) Youth and Community Programme or post graduate qualification validated through the National Youth Agency, or equivalent qualifications
- Recent experience in **developing innovative expressions of ministry** for children, young people and families
- **Experienced in working ecumenically**, with flexibility in working patterns (including evenings/weekends), and able to travel across rural and urban areas with a full driving licence (or equivalent arrangements)
- A clear **enhanced DBS check** (including barred list) is required

DESIRABLE CHARACTERISTICS

- Experience of working in **rural or multi-parish** church contexts
- Able to **adapt** to changing worship styles
- Confident in **leading intergenerational worship** or activities
- Skills in **digital communication or media**



This post is subject to an occupational requirement under Part 1 of Schedule 9 to the Equality Act 2010 due to the representational aspects of the role within the Diocese of Worcester that the post-holder be a committed Christian, lay or ordained, and an active communicant member in good standing within the Church of England or of a Church which is in Communion with the Church of England, or a Church that is a member of the Churches Together in Britain and Ireland, Churches Together in England or the Evangelical Alliance.

OUR BIGGEST CHALLENGES IN CHILDREN AND YOUTH MINISTRY

- We aspire to convert our large family seasonal attendance to a more regular engagement throughout the year
- We would like to develop discipleship programmes for each age group within our church. The children, youth and family worker would take the lead in developing programmes for ages 0–5, 6–10, 11–18
- As we seek to develop further contemporary forms of worship, there is a need to ensure that these services reach every generation in our community
- We would like to inspire more people to take active roles in our children's groups
- There is an immediate need to develop our Sunday offerings for children and youth in all three churches
- As we desire to grow as a multi-generational church, we must balance needs of young people with long-standing members

WHAT YOU CAN EXPECT FROM US

We understand that there is a lot involved in being a Children, Youth and Family Worker for the benefice and its three churches and we don't expect anyone to be able to do it all alone!

We believe that God will support you on your journey and we're also here to support you as best we can. Here's how we'll do it...

ONE CHURCH. THREE LOCATIONS

A GOOD SIZED TEAM AND VOLUNTEERS

From our Rector to our amazing Associate Priest to our churchwardens, servers, sidespeople, readers, PCC team, florists, and musicians, everyone plays a vital part in creating a welcoming and spiritually uplifting environment.

ENCOURAGEMENT OF YOUR DEVELOPMENT

We support the Diocese of Worcester's mission to provide training and development opportunities to enable you to grow and feel supported and equipped for your mission here.

SPIRITUAL SUPPORT

We will support you with prayer and encouragement during all the opportunities and challenges that your ministry with us may bring. You will be encouraged to take Retreat Days as part of this support within your working hours.

WORK-LIFE BALANCE

Being a Children, Youth and Family Worker may be a calling, but everyone needs to re-charge and take care of their mental wellbeing! We will help to protect your day off and support your relationships with those you share your life with.

TURN THE PAGE TO MEET THE TEAM...



Father Tom Owen
Rector



Alison Lewis
LLM



Rosie Padmore
ALM



Sharon Bryant
ALM



Jenny Moulder
ALM & PSO



Susan Priest
Parish Admin



Revd Kim Topham
Associate Priest



Jon Bryant
St. Saviour's
Children's Lead



Robyn Owen
St. Saviour's
Children's Volunteer



Liz Clarke
St. Saviour's
Children's Volunteer



Diane Mottershead
St. John's
Children's Volunteer

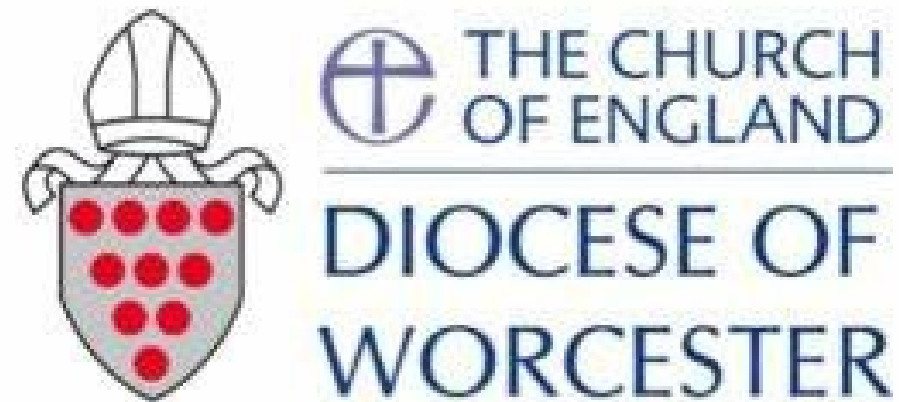


Natalie Baker
PSO & Clent Children's
Coordinator

ONE CHURCH. THREE LOCATIONS

OUR CHILDREN'S MINISTRY TEAM

HOW THE DIOCESE WILL SUPPORT YOU



OUR COMMITMENT TO YOU AND YOUR BENEFITS

- You will join a group of employed youth and children's workers
- Regular team meetings offering prayerful support, sharing of resources and ideas, and training to inspire your ministry
- An annual, 24-hour retreat
- Supervision from the diocesan youth and children's adviser
- Subscription to Youth and Children's work magazine online for resources and ideas
- Continuing professional development opportunities both within the diocese and connected to the national 'Growing Faith Foundation'

DIOCESE AND DEANERY

All three of our churches sit within Greater Dudley Deanery, part of the Diocese of Worcester. The diocesan vision is to grow as Kingdom People, sharing the good news of Jesus' love in Worcestershire and Dudley through churches that are growing in health and sustainability.

DIOCESAN PRIORITIES 2023 –2030

- Double the number of **children and young people** worshipping in our churches.
- Create 100 **new worshipping communities** offering a range of ways for people to come to faith and worship God. (eg Forest Church / Café Church / Walking Church).
- Invest in the **renewal** of around a dozen churches to ensure that each major area of population has at least one church with 150 people attending weekly, enabling them to support other local churches.
- Underpin these by investing in clergy and lay leaders, providing training and development opportunities to enable them to grow and feel supported and equipped for mission

One size doesn't fit all – the diocese want to strengthen local churches and encourage and resource them to explore what it might mean to grow in health and sustainability in their context as they worship God, make disciples, share hope, and transform communities.



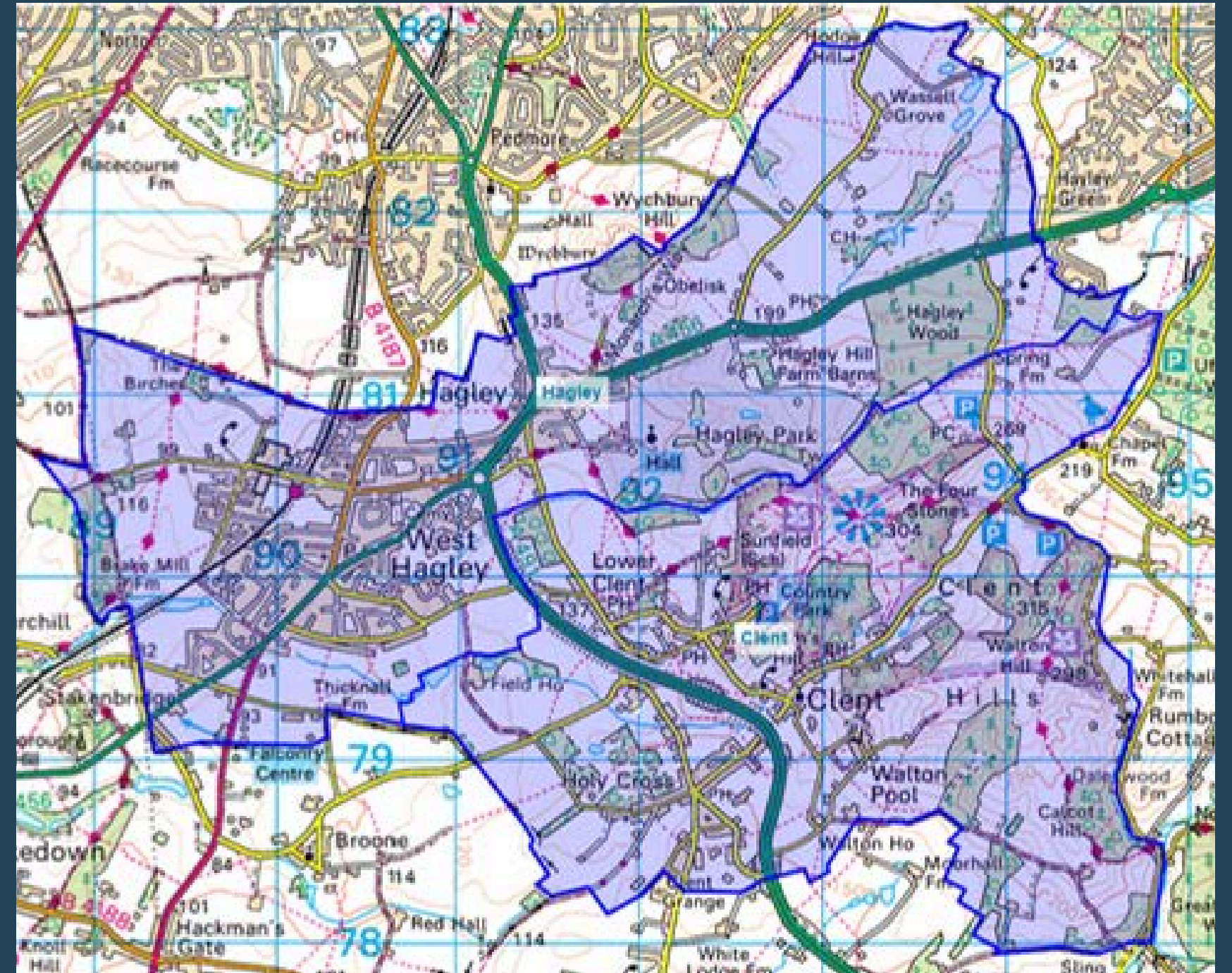
SHARING GOD'S LOVE IN THE COMMUNITY



ABOUT OUR PARISHES

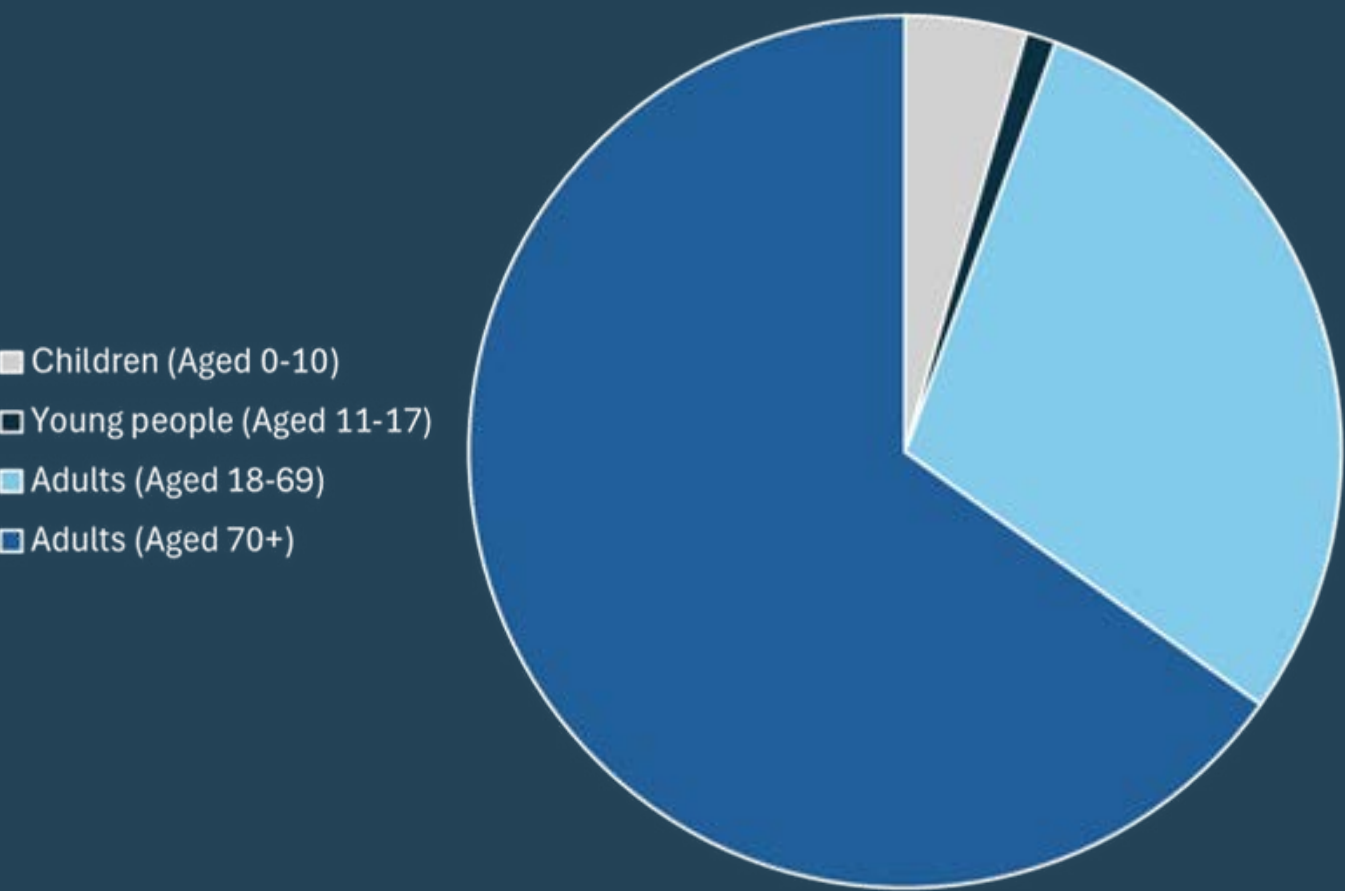
For those who enjoy walking, cycling, horse riding or simply being in nature, our parishes are ideally situated. The surrounding Clent hills is a well-known beauty spot cared for by the National Trust. There are walking trails and a café where dogs are welcomed.

Both Hagley and Clent villages are well supplied with shops, cafes, restaurants, and pubs.



CHURCH STATISTICS

Worshipping community across our three churches:



	St. Saviour's & St. John the Baptist	St. Leonard's
Regular worshipping community	82	63
Usual Sunday	61	30
Average weekday, (October '23)	18	10
Advent (carol concerts, nativities, crib services)	356	430
Christmas	160	46
Easter	89	120
Worship 4 all		30
Café Church	45	

OUR TYPICAL SERVICE PATTERN

18 May Family Service - St Leonard's 10:30am

A Service intended to reach the youngest to the oldest in our community

25th May Holy Communion - 10:30am

St Saviours Children's Club
learn, play and come together as we tell the story of Jesus

15th June: Family Service, St Johns - 10:30AM

A Service intended to reach the youngest to the oldest in our community

1st June: Worship4all, - 10:30am

St Leonard's
A service aimed at reaching all age groups

22nd June: Holy Communion - 10:30am

St Saviours Children's Club
learn, play and come together as we tell the story of Jesus

8th June: Benefice Service, St Leonards -10:30am

All the church family joining together - Kids corner with activities

29th June: Benefice Service - 10:30am

All the church family joining together - Kids corner with activities

St Saviours Hagley

3 Park Road
Hagley, Stourbridge
DY9 0NS

St John the Baptist, Hagley

Hall Drive
Hagley
DY9 9LQ

St Leonard's, Clent

St Leonard's Square
Clent
DY9 9PN

HOW WE REACH CHILDREN AND YOUNG PEOPLE

Sunday Club

Sunday Club at St. Saviour's is a vibrant and growing ministry that plays a vital role in nurturing the faith of our youngest church members. Held during term time on the second and fourth Sundays of each month, it welcomes children aged 2 to 9 into a **joyful, safe, and faith-filled environment**. Led by a passionate team of volunteers, the children begin in the main church service before heading out to enjoy a dynamic programme that blends worship, Bible teaching, games, crafts, and play.

Our recent themes have explored the character of Jesus and the life of Peter, helping children **connect deeply with Scripture** in ways that are meaningful and age-appropriate. At the end of each session, the children return to share their experiences with the wider congregation – an uplifting moment that blesses the whole church family.



Family Services and Café Church

Across our three churches, a small but dedicated team faithfully leads a monthly **Family Service** that brings the whole church family together in worship. These services rotate between our churches and embrace a variety of styles – from more traditional liturgy to relaxed **Café Church** formats, and even services where children take an active role in leading and presenting. Each gathering is a joyful opportunity to explore new ways of worshipping together and to celebrate the richness of our multigenerational community.

These services are designed to be inclusive, creative, and engaging — **spaces where people of all ages can encounter God**, participate meaningfully, and grow in faith. Whether through storytelling, music, prayer, or shared conversation, Family Services and Café Church offer a refreshing and relational approach to worship.



Worship4All

Worship for All is a monthly service designed to bring together people of all ages in a **relaxed, welcoming** environment. Led by our Authorised and Licensed Lay Ministers, the service combines **tradition with creativity**, offering short, interactive reflections, **age-appropriate** teaching, and hymns that **connect with all generations**.

Children are invited to engage through a special Children's Corner, with activities they can share at the end of the service. Through **simple storytelling, visual aids**, and **participatory moments**, we aim to plant and nurture seeds of faith in hearts both young and old.



Young Families BBQs

Alongside Worship and bible-centred discipleship, we also believe it is important to develop **community through fellowship**.

Our Young Families BBQ fulfils this intention, joining together for **fun, food, and laughter**, strengthening the bond of this community through the **love of Jesus**.



OUR SCHOOLS WORK



CLENT PAROCHIAL PRIMARY SCHOOL

The church has a strong link with Clent School where our Associate Priest is actively involved as a Foundation Governor. A connection is maintained through monthly assemblies and annual welcome and farewell services for the children within the church. A junior choir has also developed from within the school. There is also a Bible Book Club which everyone is welcome to attend.



HAGLEY PRIMARY SCHOOL

Our Churches have had a rich partnership with the school in the past incorporating lunch groups, assemblies and open the book sessions. More recently the church has had less involvement with the school most especially post-Covid. A large part of the Children, Youth and Family Worker's role would be to continue to develop and nurture our relationship with this school alongside the Rector.



HAYBRIDGE HIGH SCHOOL

In recent months we have found a greater willingness from the school for engagement with our local churches, most especially in relation to the RE Curriculum. We have extended an invitation for church visits and 'grill the vicar' sessions which have been welcomed in theory. Developing this relationship will again be a pivotal part of the role.

COMMUNITY FOCUSED

Clent Connect is a Community Benefit Society and was born from the out-pouring of community spirit and support during the Covid pandemic. The original vision and aim was, and still is, to “Provide the residents of Clent with a friendly, vibrant, socially inclusive community hub incorporating a café and small shop to create a focus and enhance village life”. The church, school and local community have close links with Clent Connect, which we would like to develop further in the future.

The **Hagley Hub** launched in 2023 as a warm space in St. Saviour’s to cater for winter demand. It has now grown into a year round [every Tuesday during term time] community-led multigenerational gathering that welcomes all for a cuppa, a chat and a play in a bustling atmosphere. It is well attended by many families with pre-school children, and is supported by different local groups and businesses.



OUR FACILITIES



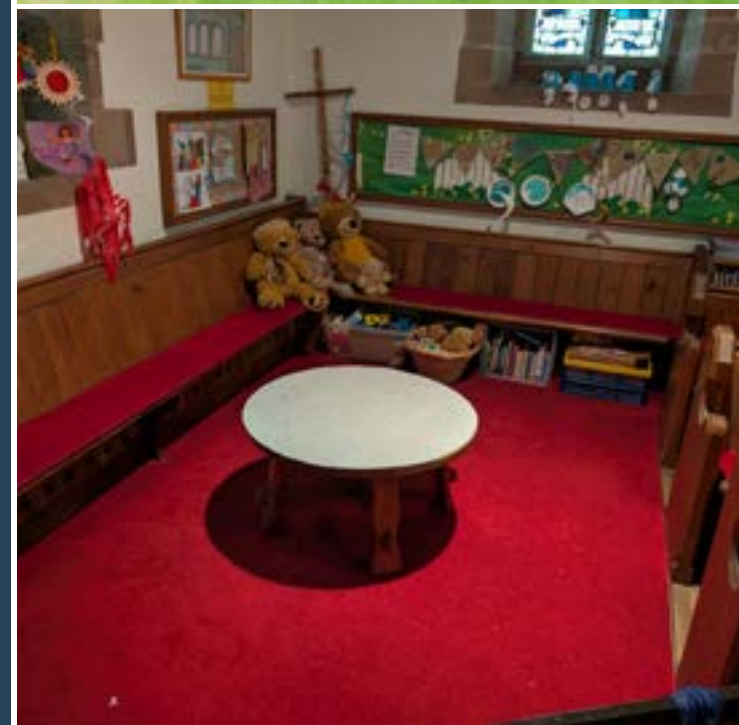
ST. SAVIOUR'S CHURCH HALL

The church hall is well used throughout the week by a wide variety of church and non-church groups including; Hagley Hub, coffee mornings, dance and exercise groups and Rainbows.



WYCHBURY ROOM

Adjacent to St. John the Baptist, the room is used by Hagley Cricket Club, local community cricket events and as a practice room for a variety of groups. It is an excellent facility in a great location.



ST LEONARD'S FAMILY CORNER

We currently have a space within the church dedicated for families. This includes toys, craft and activities for our children during the service. There are plans to develop this area of the church to create a more dedicated children and youth facility area.

SCHOOLS

Both Hagley and Clent Parishes boast schools renowned for their excellence and supportive learning environments.

From Hagley Primary School and Haybridge High School, known for their strong values and academic achievement, to Clent Parochial Primary School and the Catholic High School in Hagley, which instill Christian values, we have a diverse range of educational opportunities.

Additionally, Sunfield provides specialised education, care, and therapy for children and young people with a variety of social, emotional, physical, and learning difficulties, including autism and visual impairment.

ONE CHURCH. THREE LOCATIONS

HAGLEY PRIMARY SCHOOL & KINDERGARTEN

Ofsted Rating: **Good**

CLENT PAROCHIAL PRIMARY SCHOOL

Ofsted Rating: **Good**

HAYBRIDGE HIGH SCHOOL (A FOUR STONES MULTI ACADEMY TRUST SCHOOL)

Ofsted Rating: **Good**

CATHOLIC HIGH SCHOOL

Ofsted Rating: **Good**

SUNFIELD INDEPENDENT SPECIALIST SCHOOL

Ofsted Rating: **Good**

HEALTHCARE AND CARE HOMES

Hagley and Clent provide a range of healthcare options, including several medical surgeries and dental practices.

For older people and those with dementia, we are fortunate to have The Gables, Chandos Lodge and Field House Care Homes right on our doorstep, should you need to consider care options for a loved one.

ONE CHURCH. THREE LOCATIONS

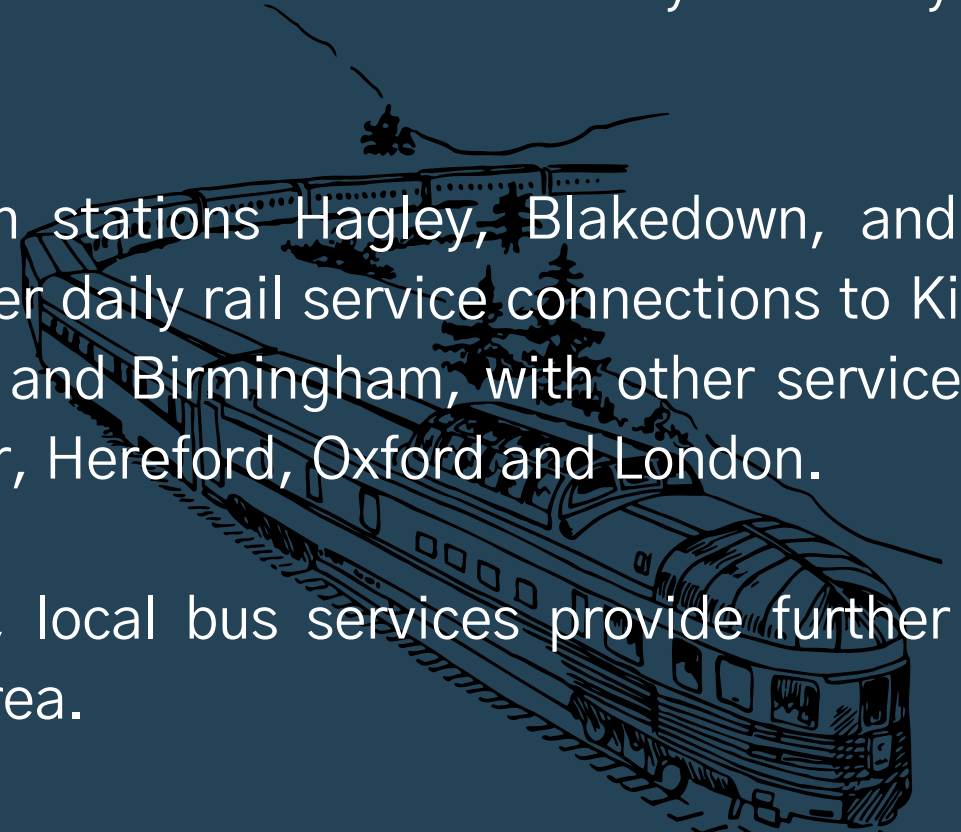
TRANSPORT LINKS

Hagley and Clent are both served by a variety of transport options.

Nearby train stations Hagley, Blakedown, and Stourbridge Junction offer daily rail service connections to Kidderminster, Stourbridge and Birmingham, with other services connecting to Worcester, Hereford, Oxford and London.

Additionally, local bus services provide further accessibility within the area.

With easy access to the M5 motorway at junctions 3 and 4 as well, Hagley and Clent offer great connectivity for both local and long-distance travel.



CONTACT INFORMATION

ST. SAVIOUR'S CHURCH OFFICE



01562 886 363



admin@hagleycofe.co.uk



1 Park Road, Hagley, Stourbridge, DY9 0NS

FOR AN INFORMAL CHAT ABOUT THE ROLE:

Rector: Fr Tom Owen: 07383920702 vicar@hagleycofe.co.uk

Application Deadline: Tuesday 11th November
Shortlisting: Thursday 13th November
Interview Day: Friday 28th November

ST. JOHN THE BAPTIST

Hall Lane, Hagley, Stourbridge,
West Midlands, DY9 9LG

ST. LEONARD'S

St. Leonard's Square, Church Avenue,
Clent, Worcestershire, DY9 9PN

ST. SAVIOUR'S

1 Park Road, Hagley, Stourbridge,
West Midlands, DY9 0NS